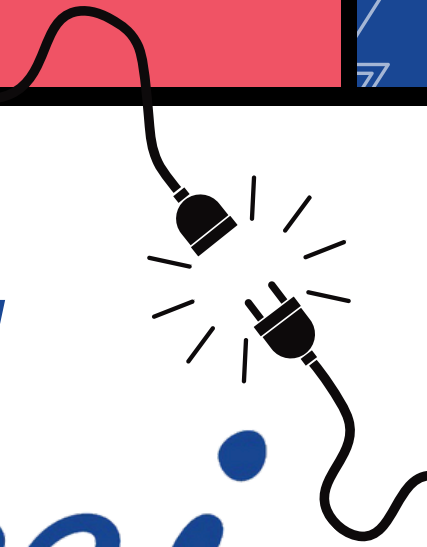


**JOIN US,**



**Uweei**



**UNITED WORKERS  
OF ELECTRONICS  
& ELECTRICAL  
INDUSTRIES**



**#EVERY  
WORKER  
MATTERS**

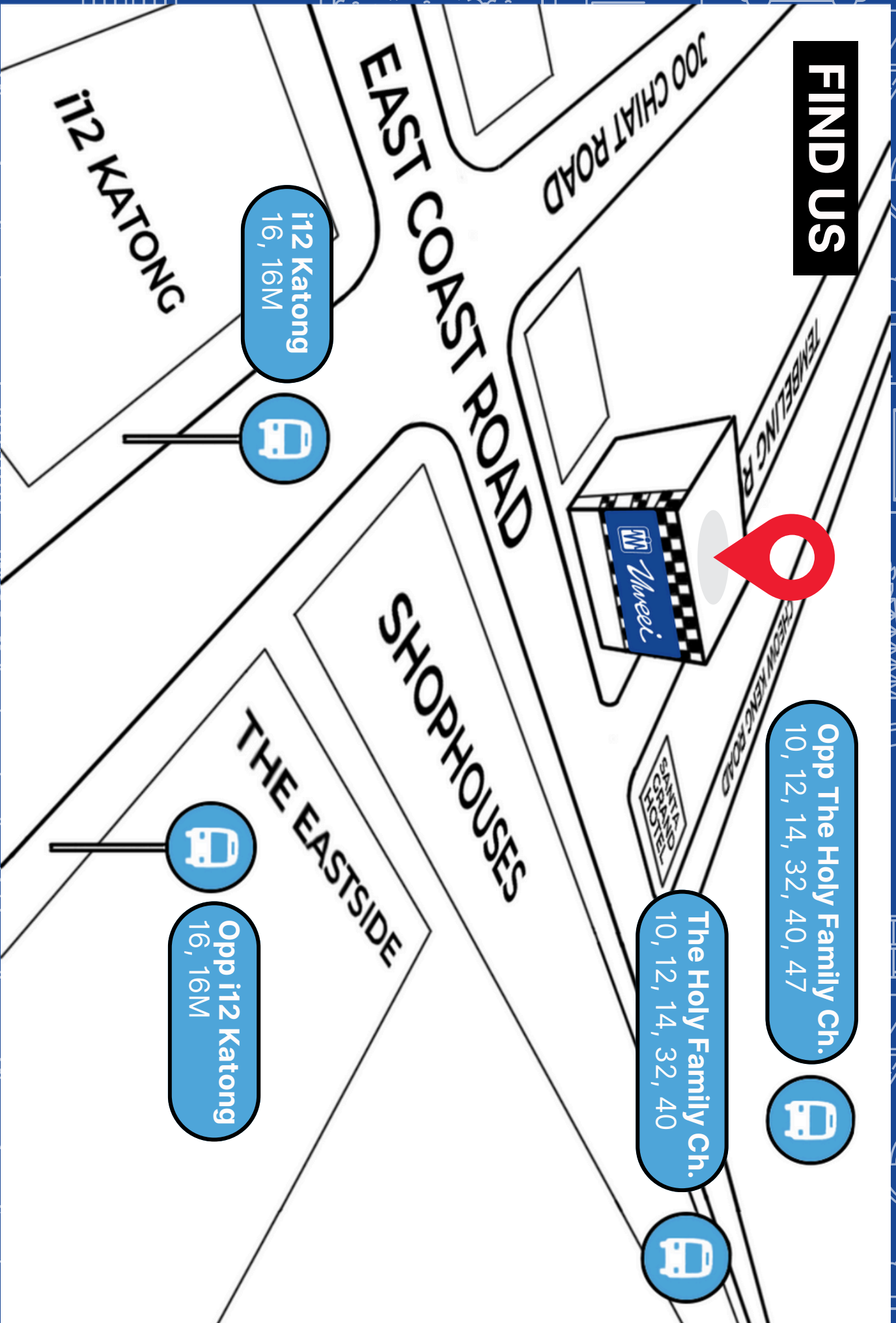
**MEMBERSFIRST  
WORKERSALWAYS**

Affiliated with

**ntuc**

National Trades Union Congress

# FIND US



Opp The Holy Family Ch.  
10, 12, 14, 32, 40, 47



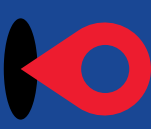
The Holy Family Ch.  
10, 12, 14, 32, 40



Opp i12 Katong  
16, 16M



i12 Katong  
16, 16M



252 Tembeling Road  
#03-07 Tembeling Centre  
Singapore 423731



MRT Station	<b>Dakota</b> (exit A)	<b>Kallang</b> (exit A)
Boarding Bus-stop	Dakota Stn Exit A/Bik 99	Kallang Stn
Bus #	<b>10, 32</b>	<b>16</b>
Alighting Bus-stop	Opp The Holy Family Church (7 stops)	Opp The Holy Family Church (12 stops)



Scan to locate UWEEI in Google Maps!



# United Workers of Electronics & Electrical Industries

## About UWEEI

- One of the largest unions in Singapore, representing almost 64,000 workers in more than 100 companies in electronics, semiconductor and medical technology sector
- One of the 58 trade unions affiliated to NTUC

## 关于UWEEI

- 新加坡最大的工会之一; 代表几乎64,000名工友和100间电子, 半导体和医疗技术行业工作的公司
- 职总属下58个工会之一

## “*Dear UWEEI member,*

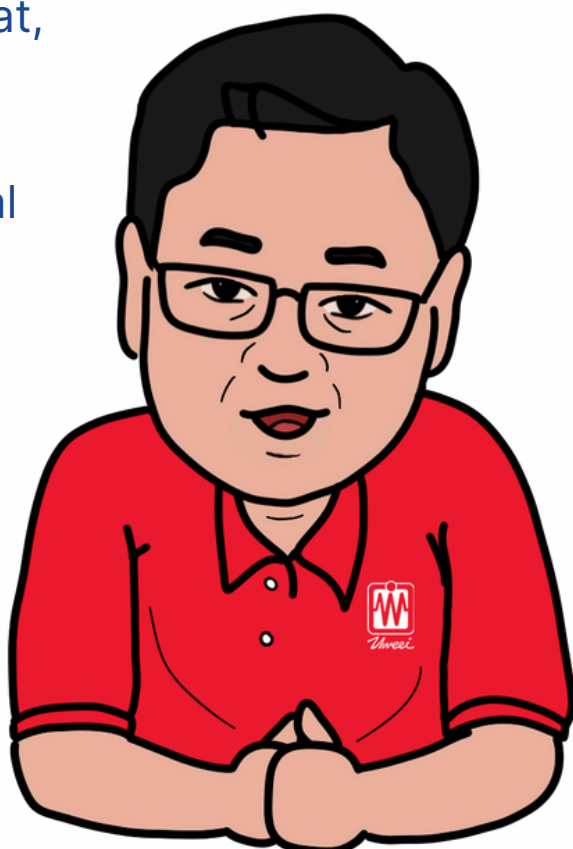
I warmly welcome you to the UWEEI family. We are a union formed since 1981 to serve workers of the electronics, semiconductor and the medical technology industry. We are now almost 64,000 strong and still growing at a good pace as we protect, benefit and care for our members.

So long as you are working for a company in Singapore's electronics industry, you can join us. Rank-and-file workers or PMEs (Professionals, Managers, and Executives), young employees or mature ones, and employees from different countries can all be part of this dynamic Union.

You can be advised on workplace protection, care and support, have faith that your rights are being actively advocated for, and on top of that, you can enjoy various benefits and an exciting social calendar. Our wide network of commercial partners will certainly also bring you many special promotions and privileges.

I urge you to sign up today. Together, we can create a better future for our workers.

**Tan Richard**  
**General Secretary**





# ***REPRESENTING WORKERS***

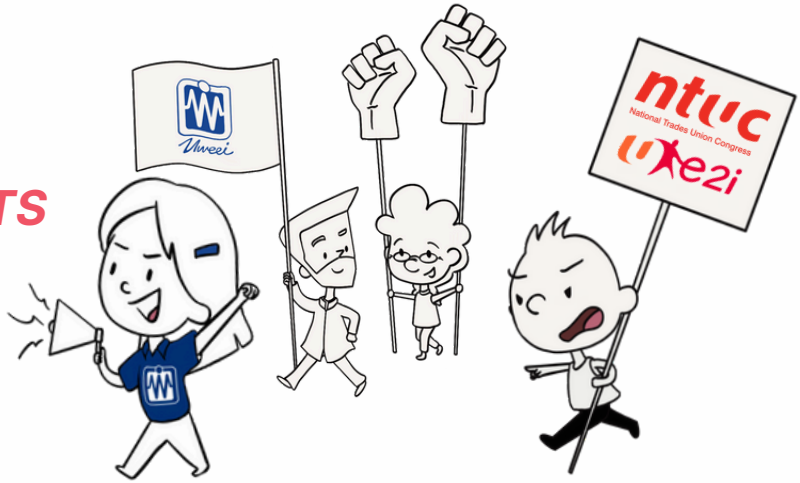
# ***PROTECTING YOUR EMPLOYMENT***

- 1. How Unions Help Workers  
工会如何帮助工友**
- 2. LawWorks Legal Clinics &  
Legal Primers Programme  
法律诊所及法律入门课**
- 3. Upskilling Resources  
提升技能资源**
- 4. Job Search Resources  
求职资源**

# HOW UNIONS HELP WORKERS 工会如何帮助工友

## ADVOCATE FOR BETTER WAGES, WORK PROSPECTS & WELFARE

争取更好的工资,  
工作远景, 及福利



## OFFER YOU UWEEI & NTUC BENEFITS

提供UWEEI和NTUC会员福利

## PROTECT YOUR EMPLOYMENT RIGHTS AND HELP YOU WHEN THERE ARE GRIEVANCES

保障您的就业权益, 当面临不公平待  
遇时, 工会能为您提供帮助



## CARE AND ASSIST YOU IN DIFFICULT TIMES (E.G. RETRENCHMENT, FINANCIAL HARDSHIP)

在您遇到困难时, 帮助您  
(例如: 裁员, 经济困难)

## LawWorks Legal Clinics & Legal Primers Programme 法律诊所及法律入门课

# LAWWORKS



JUSTICE FOR ALL

LawWorks is a collaboration between NTUC and the Law Society Pro Bono Services. These are the **free services** exclusive to NTUC union members:

- Monthly legal clinics for personal legal issues/matters.
- Legal primers to educate members on workplace rights.
  - Register via email at [lawworks@ntuc.org.sg](mailto:lawworks@ntuc.org.sg).





HI PATRICK, WHAT'S THE DIFFERENCE BETWEEN A UNION MEMBER AND SOMEONE WHO ISN'T?

WHAT AM I GETTING FOR THE ANNUAL MEMBERSHIP FEES?

IS IT JUST FAIRPRICE SHOPPING REBATES & DISCOUNTS?

BEING A UNION MEMBER MEANS THAT YOU GET WORKPLACE PROTECTION! OUR MEMBERSHIP GIVES YOU MORE VALUE THAN YOUR ANNUAL FEES!

YOU CAN GET ADVICE AND SUPPORT FOR ANY WORKPLACE GRIEVANCES!

ALSO, DO YOU KNOW THAT OUR UNION BENEFITS ARE DESIGNED TO GIVE YOU MORE VALUE THAN WHAT YOU PAY?

OH! WHAT IS IT?

Patrick Tay,  
Executive Secretary



SIGN UP HERE TO FIND OUT MORE  
[HTTPS://NTUC.CO/UWEEI](https://ntuc.co/uweei)



[ntuc.co/uweei](https://ntuc.co/uweei)

XIE XIE NI.  
INI SANGAT BAGUS!  
(THANK YOU, THIS IS GREAT!)

# Know your employment rights

**Members from both unionised and non-unionised companies may seek workplace advice and/or union representation for workplace issues.**

## **Example: Retrenchment Benefits**

- Retrenchment benefit is not compulsory, by law.
- Unionised companies generally pay fair retrenchment benefits to workers.
- If a company does not pay fair retrenchment benefits, the Union will negotiate on your behalf.

## **Example: Unfair Dismissal or Salary Claims**

- *If the grievance is not resolved after negotiation with company:*
  - *For members in unionised companies, Union will escalate to MOM and the Industrial Arbitration Court.*
  - *For members in non-unionised companies, Union will assist you to file the case at the Tripartite Alliance for Dispute Management (TADM); claim limit for union members is \$30,000 (\$20,000 for non-members).*

## 不知道如何解决关于雇佣的问题？

### 工会能提供咨询和代表您

- 例子: 裁员赔偿
- 法律没有强制性规定公司必需提供裁员赔偿。
- 如果您不幸被裁，而认为您没获得适当的补偿，工会能代表您跟公司谈判。

- 例子: 雇佣纠纷, 工资纠纷, 合约纠纷
- 工会能代表您跟公司谈判。
- 如果纠纷无法解决，工会能帮助您向人力部 (MOM)或劳资政纠纷调解联盟 (TADM) 申诉; NTUC会员在TADM的赔偿限额为\$30,000 (非会员为\$20,000)。

# UPSKILLING RESOURCES

## 提升技能资源

# UTAP

## Union Training Assistance Programme (UTAP)

### 培训福利

- Enjoy up to **\$500\*** worth of training benefits per year when you register for workshops and courses to boost your employment and employability!
- *UTAP allows you to combine SkillsFuture Credits for even more savings on your course fee*



[e2i.sg/utapmembers](https://e2i.sg/utapmembers)

*\*This applies to courses attended from 1 July 2020 to 31 December 2025.*

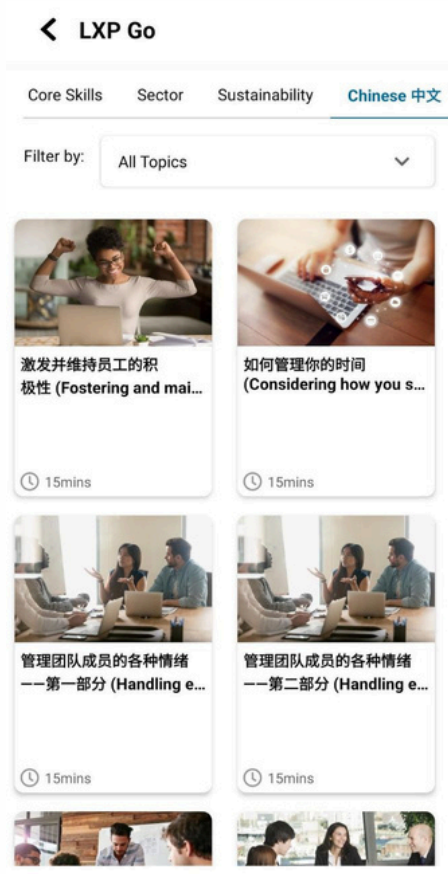
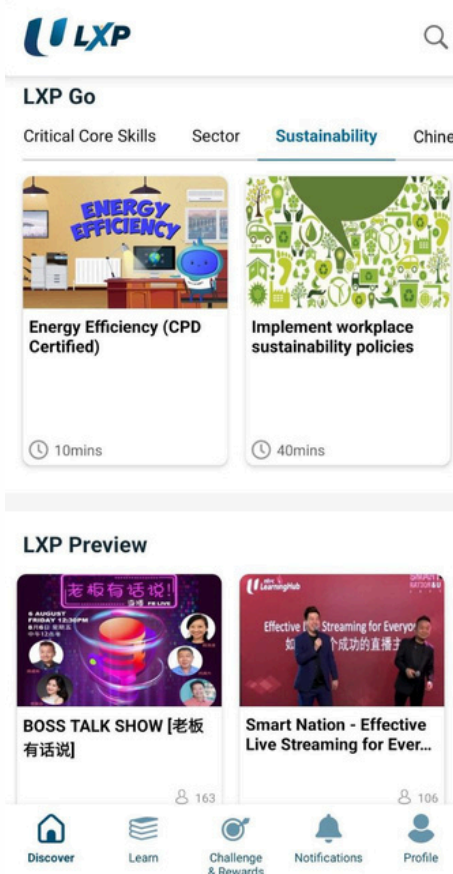
# LXP

Powered by  
NTUC LearningHub

## Learning eXperience Platform (LXP)

### LXP 网上学习平台

- Learn anytime, anywhere with *Singapore's largest subscription-based online learning app.*
- For **\$5/month**, access **over 75,000 bite-sized courses**



[ntuclearninghub.com/lxp](https://ntuclearninghub.com/lxp)



**Download LXP App now!**





# JOB SEARCH RESOURCES

## 求职资源



Employment and  
Employability  
Institute

*Employment and Employability Institute*

- Approach NTUC's e2i to enhance your employment prospects and employability.
- e2i offers workers **job-matching, career guidance and skills upgrading services**, and provides employers with **recruitment, training and job redesign solutions**.



Contact e2i at:



[www.e2i.com.sg](http://www.e2i.com.sg)



6474 0606



Scan here for  
e2i Resource Guide  
for Individuals



NTUC U PME  
U-经理与执行员

***Are you a Professional, Manager or Executive (PME) interested in workplace, career and professional development?***

- Wondering how to build your LinkedIn Profile? Wanting to brush up on your interview skills? Interested to chart your career?
- Good news! U PME supports PMEs through job search, training, and career coaching services.





# ***TOGETHER, WE'VE GOT YOU COVERED***

## **1. NTUC U CARE Assistance**

- NTUC Care Fund
- U Care Hardship Grant
- NTUC GIFT  
*(Group Term Life Insurance For Trade Union Members)*  
工会会员团体定期人寿保险

## **2. UWEEI Assistance/协助**

- UWEEI Hardship Grant
- UWEEI Education Awards

## **3. Trust Bank**

The NTUC – U Care Fund is the charity arm of the Labour Movement that aims to better the welfare of lower-income members and their families.



## NTUC - U Care Fund Assistance Programmes

Each year, the NTUC Care Fund assists eligible members with various annual and one-time schemes to **offset the rising cost of living for daily essentials**.

Members must meet the respective schemes' income criteria, be living in Singapore, and have at least 6 months of continuous paid-up union membership.

### How do I apply?

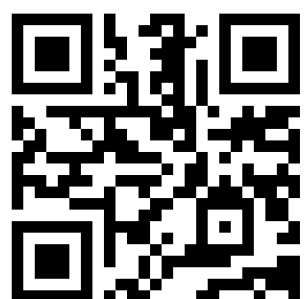
You can look out for application details on the NTUC website:  
<https://ucare.ntuc.org.sg>



## U Care Hardship Grant/关怀基金

- One-off assistance to lower-income union members in the event of hardship arising from one of the following circumstances which is non-industrial in nature: a) death, b) total and permanent incapacity, c) serious chronic medical condition, and d) registered fire or flood victim  
UCare关怀基金是为低收入工会会员提供的一次性援助, 帮助他们应付下列非工业性质的困难: a)死亡, b)完全和永久丧失工作能力, c)严重慢性疾病, 及d)登记的火灾或水灾受害者
- Member's total monthly gross household income must be below \$1,800 or per capita income of \$500 and below.
- Member must have at least 6 months of continuous paid-up union membership.

For the latest information and eligibility criteria, please visit [ucare.ntuc.org.sg](https://ucare.ntuc.org.sg).





# UWEEI ASSISTANCE/协助

## We care for you in difficult times

### UWEEI Hardship Grant/艰苦条件津贴

- One-off assistance to members in financial hardship due to: a) serious long-term illness, b) hospitalisation, c) death of member, d) accidents (includes natural calamity), and e) involuntary loss of job (e.g. retrenchment).
- For information or to apply, please visit [www.uweei.org.sg](http://www.uweei.org.sg) or email [uweei@ntuc.org.sg](mailto:uweei@ntuc.org.sg).

## We support your children's education

### UWEEI Education Awards/奖学金及助学金

- UWEEI offers 5 types of education awards, open to children of members from Primary School to tertiary education (ITE, Polytechnic, University).
- For those studying in Singapore:
  - **Scholarship:** For those with exceptional results
  - **Bursary:** For those from lower income families
  - **Special Award:** For children with special needs
  - **STAR Award:** For those with exceptional non-academic achievements
- For those studying overseas:
  - **Pocket Money Fund:** For children from lower income families

- UWEEI每年颁发5类助学与奖学金, 开放给就读小学至高等学府会员的子女。
- 在本地就学的子女:
  - **奖学金:** 考试取得优越成绩的子女
  - **助学金:** 较低收入家庭的子女
  - **特别奖:** 有特殊需要的子女
  - **星奖:** 有非学术成就的子女
- 在海外就学的子女:
  - **零用钱基金:** 较低收入家庭的子女



## How do I apply?

Online applications typically open around late May annually. Do keep a look out for our email announcement and social media posts for the latest information.

**Flip to the back for  
our social media**

## NTUC GIFT/ 工会会员团体定期人寿保险

### Complimentary Group Term Life Insurance For Trade Union Members

- For members at least 16 years old & below 65 years old
- **Up to \$40,000 payout** for death, total/partial and permanent disability for **you** (eligibility applies)
- **Up to \$1,000 payout** for death, total and permanent disability for **your spouse** (eligibility applies)
- If you would like to file a claim, please email [uwei@ntuc.org.sg](mailto:uwei@ntuc.org.sg) for more information

#### 谁可受保?

1. 符合下列条件的职总附属工会会员：
  - 年龄在16岁或以上、但少于65岁, 和
  - 持有至少连续6个月的工会或联合会 会籍, 并且没拖欠会费
2. 年龄在16岁或以上、但少于65岁的会员配偶, 唯会员本身须符合相关资格标准
  - 符合条件的**会员**可享有**高达\$40,000**死亡和永久性全残/局部残保险
  - 符合条件的**会员配偶**可享有**高达\$1,000**死亡和永久性全残保险
  - 如果想提出索赔, 请电邮至[uwei@ntuc.org.sg](mailto:uwei@ntuc.org.sg)知道更多详情

For the latest information and eligibility criteria, please scan the following QR code to view the e-brochure (in English):



关于最新咨询和资格标准, 请扫描以下 QR码查看电子手册(中文):



**NTUC GIFT/  
工会会员团体定期人寿保险**

**Payouts for Death 死亡赔付金额**

<b>Death Benefits</b>	<b>Less than 10 years of continuous membership</b>	<b>10 years &amp; above of continuous membership</b>
Death - natural causes (24 hours)	\$6,000	\$7,500
Death - accident <b>during</b> working hours	\$6,000	\$7,500
Death - accident <b>outside</b> working hours	\$20,000	\$40,000
Death of member's spouse (below 65 years old) - to all causes	\$500	\$1,000

## Payouts for Permanent Disability 永久性残疾赔付金额

### Total & Permanent Disability/永久性全残 (TPD)

Total & Permanent Disability (TPD) Benefits	Less than 10 years of continuous membership	10 years & above of continuous membership
TPD - natural causes (24 hours)	\$6,000	\$7,500
TPD - accident <b>during</b> working hours	\$6,000	\$7,500
TPD - accident <b>outside</b> working hours	\$20,000	\$40,000
TPD of member's spouse (below 65 years old) - to all causes	\$500	\$1,000

### **Total and Permanent Disability (TPD) means**

(a) The complete and continuous inability of the insured to engage in any business or occupation or perform any work of any kind for remuneration or profit at that time and at all times thereafter. For avoidance of doubt, if the insured is able to engage in simple or sedentary types of occupation, the insured is not considered to be totally and permanently disabled; or

(b) Total physical loss (refers to any one of the following):

- the total and permanent loss of sight of both eyes;
- the loss by complete severance or total and permanent loss of use of both limbs at or above the wrist or ankle or;
- the total and permanent loss of sight of one eye and the loss by complete severance or total and permanent loss of use of one limb at or above the wrist or ankle.

## Partial & Permanent Disability/永久性局部残疾 (PPD)

Partial & Permanent Disability (PPD) Benefits	Less than 10 years of continuous membership	10 years & above of continuous membership
PPD due to natural causes (24 hours)	\$1,000	\$2,000
PPD due to accident <b>during</b> working hours	\$1,000	\$2,000
PPD due to accident <b>outside</b> working hours	\$10,000	\$20,000

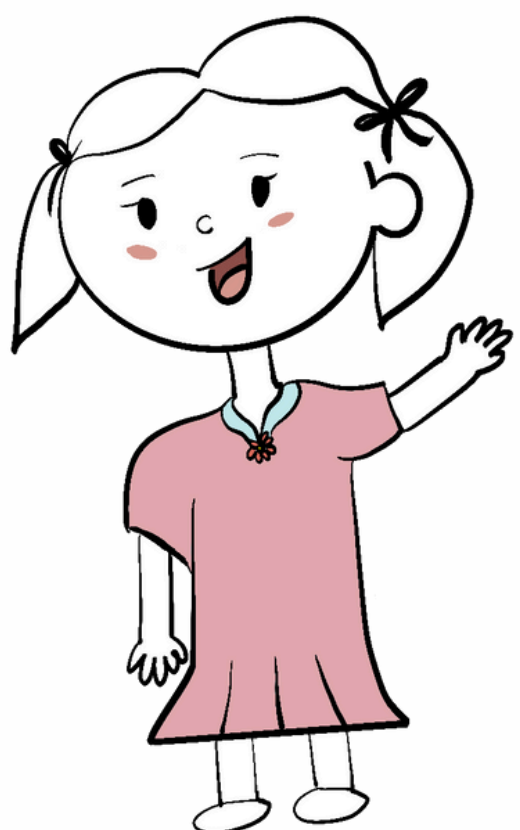
### **Partial & Permanent Disability refers to any one of the following conditions:**

- (a) The total and permanent loss of sight of one eye or;
- (b) The loss by complete severance or total and permanent loss of use of one limb at or above the wrist or ankle.

**Scan to watch videos of our members and their family to know how they have benefited from NTUC U Care**



My family and I have benefitted from UCare. I received bursary from 2010 to 2015. It helped me in my education.





## GIFT Extension/之延长保期

**Extended coverage for members and their spouses aged 65-74 (depending on membership tenure)!**

**为65岁至74岁的会员及其配偶提供更广泛的保障(视会员任期而定)!**

Member's age as at 1 May*	Continuous Membership Tenure as at 1 May* (i.e. tenure band)	Last Day of Extended Cover*	Token Fee Payable ***
65-66 years old	Minimum 10 years	30 Apr	\$1 per policy year or part thereof
67 years old		30 Apr OR the day before member's 68th birthday, whichever earlier**	
68 years old	Minimum 20 years	30 Apr	\$2 per policy year or part thereof
69 years old		30 Apr or the day before member's 70th birthday, whichever earlier**	
70 – 73 years old	Minimum 30 years	30 Apr	\$3 per policy year or part thereof
74 years old		The day before member's 75th birthday	

\* Each policy year is from 1 May (current year) to 30 April (following year). NTUC will extract the list of eligible members who meet the age and tenure criteria at the start of each new policy year.

\*\* Members who meet the next tenure band will be covered until 30 April (following year).

\*\*\* Token fee waiver has been extended to 30 April 2026

### Note:

*In the event of a subsequent Death or TPD claim, the total payout for all benefits shall not exceed:*

- (a) \$20,000 for members with continuous membership tenure of below 10 years; or
- (b) \$40,000 for members with continuous membership tenure of 10 years and above.





# GET UP TO 21% SAVINGS ON OUR EVERYDAY NEEDS

EXCLUSIVELY FOR NTUC UNION MEMBERS

**THAT'S EVERYDAY DELIGHT**



## UPSIZE YOUR SAVINGS IN LINKPOINTS WITH TRUST CARD

NTUC UNION MEMBERS		NON-MEMBERS	
			
Get up to <b>21% savings</b> in Linkpoints for daily needs!	Get up to <b>11% savings</b> in Linkpoints for daily needs!	Get up to <b>15% savings</b> in Linkpoints for daily needs!	Get up to <b>5% savings</b> in Linkpoints for daily needs!
<b>NTUC Link Credit Card</b>	<b>NTUC Link Debit Card</b>	<b>Trust Link Credit Card</b>	<b>Trust Link Debit Card</b>

Learn more @ [ntuc.co/trustbank](https://ntuc.co/trustbank)

**trust**  
THE DIGITAL BANK FOR THE EVERYDAY US

T&Cs apply.

A partnership by

standard chartered

FairPriceGroup  
Everything Food Made Easy





# ***DISCOUNTS & SAVINGS FOR UNION MEMBERS***

- 1. Groceries & Daily Essentials**  
杂货和日常用品
- 2. Leisure & Travel**  
休闲与旅游
- 3. Healthcare**  
健康医疗
- 4. Insurance & Financial Planning**  
保险及财务规划
- 5. UWEEI-exclusive deals**  
UWEEI 会员专享优惠

# EXCLUSIVE DEALS FOR NTUC MEMBERS 工会会员优惠折扣

## Groceries & Daily Essentials 日常用品

Enjoy savings on your daily essentials and more



**4%<sup>^</sup>** FairPrice member benefits in Linkpoints



<sup>^</sup> Based on the average historical rebate levels. Will vary from year to year and subject to approval at Annual General Meetings of the Co-operative.



**10%\*** savings when you pay via the FairPrice Group app

Signature Breakfast Set from \$2.20\* onwards

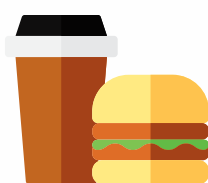
\*Terms and conditions apply



**20% OFF** monthly mobile subscription on up to 4 mobile lines, **FREE** Caller Number Display and more



**855 Linkpoints per month for your household** when you enrol your child in My First Skool



Offers on a wide variety of **F&B** items from many different merchants!

## Leisure & Travel 杂货休闲与旅游

Enjoy and experience life to the fullest



**\$10.50 Movie Tickets Every Day** and **\$3 OFF** a Medium Popcorn Combo



**30% OFF** Day Passes  
**\$10 OFF** Wild & Wet Premium Membership and Cabana Rental



**Members' rates** on leisure & lifestyle experiences booked via [www.uplay.com.sg/partner/details/uweei](http://www.uplay.com.sg/partner/details/uweei)



Various **special promotions**, including **15% OFF** Sentosa Fun Pass™



**Special Rates at NTUC Club & Golf Facilities**



# EXCLUSIVE DEALS FOR NTUC MEMBERS 工会会员优惠折扣

## Healthcare 健康医疗

*Caring for your health and family's well-being*



RafflesMedicalGroup

**Members' rates\*** for health, elderly care services (including dentistry, rehabilitation therapies) and GP consultation at clinics islandwide

## Insurance & Financial Planning 保险及财务规划

*Build your financial resilience to protect your loved ones*



Up to **\$600\*** FairPrice Group E-Vouchers when you sign up for any qualifying Regular Premium Life Insurance Plan

Up to **25% OFF\*** for purchase of a qualifying General Insurance Plan\*

1. Terms and conditions apply, available through MyNTUC app only. Insurance plans are underwritten and issued by Income. Protected up to specified limits by SDIC. This advertisement has not been reviewed by the Monetary Authority of Singapore. Information is correct as at 21 August 2023.
2. Includes plans for Home, Private Car, Motorcycle, Domestic Helper, Per-Trip Travel and Annual Travel.



Group Term Life Insurance Policy  
Coverage of up to **\$40,000\***



View all the latest deals at  
<https://www.ntuc.org.sg/uportal/memberships/deals-for-members>



# UWEEI-EXCLUSIVE DEALS 专属福利

## UWEEI X UPlay

### *Exclusive UWEEI member-only lifestyle experiences & events!*

Members can enjoy curated events and lifestyle experiences at discounted prices.



View all the latest events at <https://www.uplay.com.sg/Union/details/UWEEI> or scan the QR code!



## UWEEI D'Resort Staycation Subsidy Scheme 度假屋补贴计划

### *Special cheaper booking fees for members!*

UWEEI members are eligible to apply for a subsidy under this scheme.

This subsidy is \$50 per member per calendar year, subject to the quota of grants available each month.

Subsidy is applicable to staycation at D'Resort @ Downtown East. Subsidy is based on a first-come-first-served basis.

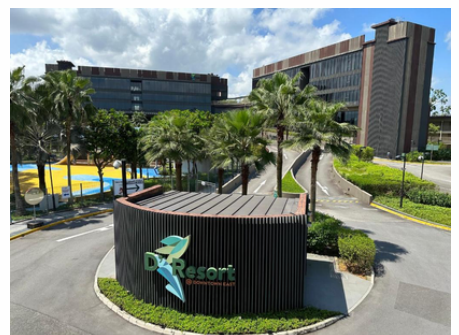
**Step 1:** Email\* UWEEI (with name, IC, contact no.) to reserve subsidy.

*\*Confirmation email will be sent to you if approved.*

**Step 2:** Book staycation unit at D'Resort @ Downtown East.

**Step 3:** Submit original booking receipt & application form to UWEEI office.

**Step 4:** UWEEI will do a quick deposit to your bank account.



*Terms & conditions apply*

## *Refer a Friend! Scheme 介绍个朋友*

**Introduce someone to sign up as a UWEEI member and get \$10 credited to your account!**

*\*Benefits accurate as at January 2024 and may be subject to changes.*

# Extension of Scope

## How can UWEEI help you?

*based on the Tripartite Guidelines on Extending the Scope of Union Representation for Executives (2017)*

An updated guideline has been produced to adapt Singapore's labour policies to changing workforce dynamics, **ensuring wider access to Union benefits for executive employees.**

UWEEI now works with **an expanded Union coverage to represent more workers.**

Here are some key pointers that you should know!



### **BENEFITS OF MEMBERSHIP INCLUSIVE OF EXECUTIVES**

Promoted the benefits of Union membership for executives, such as **training and professional development opportunities.**

### **EXPANDED UNION COVERAGE**

Unions could now represent a **broader range of executive employees** in collective bargaining for employment terms and conditions.

*\*There are limitations for Union representation for certain Executive Positions i.e. roles with sensitive decision-making or access to confidential information*

### **DISPUTE RESOLUTION**

A framework for **resolving disputes between executives and employers, with Unions playing a mediating role.**

# HOW TO CHECK YOUR UNION REFERRAL CODE

## 1 Download MyNTUC app



Get the app!



## 2 Log in to your Union account



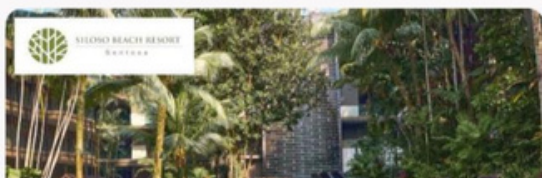
Welcome to MyNTUC!

Enjoy NTUC Membership benefits



Account

Log in



Apply for memberships

Learn more and sign up for NTUC Memberships

## 3 After logging in, go to 'Membership & cards'



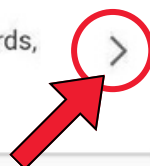
Hi **Your Name**,  
Welcome back!

Enjoy NTUC Membership benefits



Memberships & cards

Access your QR code and cards, pay fees and manage your membership



My activity

View all your activities

## 4 Copy your personalised referral code & send it to your friends

Your personalised QR code

[View e-card](#)

[View membership info](#)

Your referral code:

12-digit code











CONTACT AND CONNECT WITH US/联系和关注我们

 [uweei@ntuc.org.sg](mailto:uweei@ntuc.org.sg)

 64402338

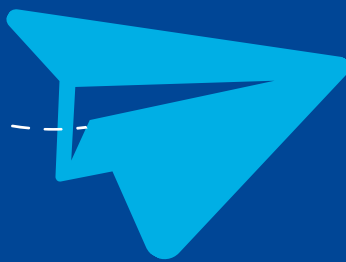
## NEWS CHANNELS

Stay in the loop and know about upcoming events, exclusive promotions, and valuable updates tailored just for you!

WHATSAPP	TELEGRAM	FACEBOOK	INSTAGRAM	LINKEDIN
				
				

## ASK UWEEI CHATBOT

Our bilingual Telegram chatbot, Ask UWEEI, provides instant answers on NTUC/UWEEI's initiatives, membership, workplace advice & much more!

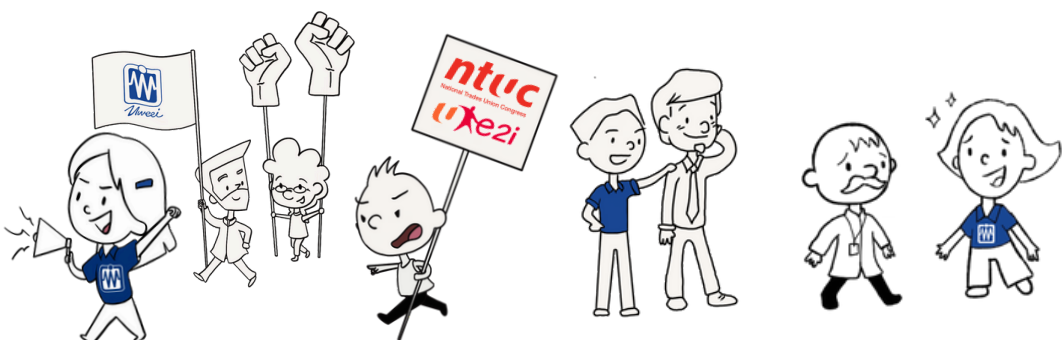


UNITED WORKERS OF  
ELECTRONICS & ELECTRICAL  
INDUSTRIES

ASK ME ANYTHING!



# Notes



# Uweel!

To more memories ahead!  
Join us at our exciting events across the year, specially curated for our UWEEI members!



